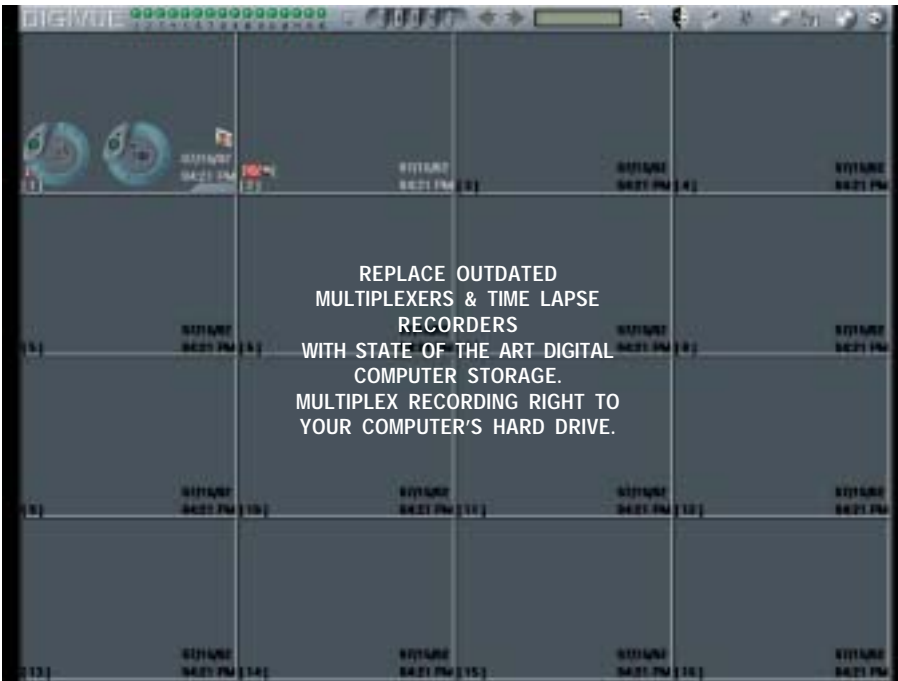




Elyssa Corporation

P.O. Box 138  
Briarcliff Manor, NY 10510

# DIGIVUE® Sophisticated State Of The Art Digital Security System



By Elyssa Corporation

**4 Cameras**  
Model EDV-004

4 channel card  
 $30 \text{ fps} \div 4 \text{ cameras} =$   
4 inputs @  
aprox 7fps per input

**9 Cameras**  
Model EDV-009

9 channel card  
 $30 \text{ fps} \div 9 \text{ cameras} =$   
9 inputs @  
aprox 3fps per input

**16 Cameras**  
Model EDV-016

16 channel card  
 $30 \text{ fps} \div 16 \text{ cameras} =$   
16 inputs @  
aprox 1.6fps per input

**"Turn your PC into a video security system!"**

- Time/Date Stamp
- Scheduled Recording
- Digital Freeze & Zoom
- Video Image Enhance Mode
- Time-Lapse Recording - Multiple Cameras
- Real Time Recording - Single Camera Only
- Sequential Switching Option With Adjustable Dwell Time
- Instant Access - Rapid Image Retrieval By Camera, Date, Or Time
- Video Motion Detection Featuring:
  - Multiple Masking
  - Sensitivity Adjustment
- Event Buffer Allows You To Record & Save Pre-Alarm Image "Before" Event Takes Place
- Virtual VCR Functions - Easy On-Screen Menus: VCR Play, Record, Fast Forward, & Rewind
- Full Duplex Multiplex Recording • Multi-Screen Or Single Camera Viewing • Record & Playback Simultaneously
- Voice Dial Alerts Sends Recorded WAV File Message\* • When Camera Video Fails • When A Protected Area Is Violated  
(\*Requires 2-Way Voice Modem)
- Remote Viewing • Over Web • Over Standard Phone Lines • Over LAN (Local Area Network) • Over WAN (Wide Area Network)
- View, Playback, & Print Digital Images With Greater Clarity Than Video Tape • Save Video In AVI Format, Still Pictures In JPEG Format  
• Adjustable Compression Rate • Image Export & Printing



==== OR ====

4pcs of 4 channel card  
120 fps ~ 16 cameras =  
16 inputs @ aprox 7fps per input

**Recording Time: At Best Quality, W/ Color Images, DigiVue Will Require 250 Mb Per Hour Of Action**

**Minimum System Requirements: Pentium III/266, 64M RAM, 8M Video Card or above.**

**Recommended: Pentium III/550, 128M RAM, 32M Video Card or above.**

800-441-9122 • Fax: 800-335-5933  
www.elyssacorp.com • www.digivue.com